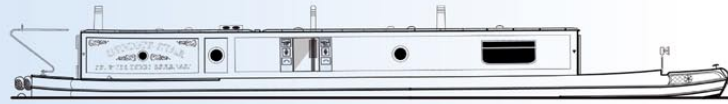




ABNB Ltd
Boat Brokerage



WIDE BEAM NARROWBOAT

RAINBOW SPIRIT

Shell by Calder Marine
Fitted out by Boats Broad & Narrow
& first owner

Length: 54ft 9in x 10ft 6in
beam (approx)
Style: Widebeam cruiser

Year first registered: 2007
Engine: Beta 50 diesel

Berths: 2 + 2
Registration no: CRT 516840
CIN: GBNBN000070706
BSS Certificate to 2015



OFFERED FOR
SALE THROUGH
ABNB

PRICE:
£69,500



4 PAGE
COLOUR
BROCHURE



SUMMARY

Stepping aboard *Rainbow Spirit*, one is struck by the very tangible difference between a 6ft something traditional width narrowboat & a wide beam design. At a modest nominal 55ft in length, but 10ft 6in (approx) in width, *Rainbow Spirit* has been intentionally designed & partly fitted by her first owner to cater for two, with the option of having two more guests staying on the large convertible dinette. Thanks to the available space, the cabin interior is perhaps more reminiscent of a modern apartment than what springs to mind when imagining a home on the canals. Since being built she has been used for extended breaks cruising, yet is equipped with all the systems & capacity to suit the needs of a full time liveaboard. The light & open galley, dinette & saloon cabins are all generously proportioned, and benefit from wide sets of front & side doors, as well as two houdini skylights that can be opened & closed to suit weather conditions. Apart from a small amount of water ingress to the bottom of the side doors, *Rainbow Spirit* is in very good condition throughout, she sports a smart exterior paint job & the interior is fitted with ash linings, solid oak floors & dinette table. Beneath the cruiser deck there is a 50hp Beta engine with just 877 hours on the clock and at the fore end there is a 24V bow thruster that is of great use when handling a boat of *Rainbow Spirit's* size.

RAINBOW SPIRIT



ENGINE

Beta Marine B50 diesel, 4 cylinders, 50hp at 2,800rpm
 • Engine built by Kubota, marinised by Beta Marine

Cooling is through a sealed skin tank on the base plate
 • **Engine control** by single lever • Engine is under decking
 • Decking insulated with acoustic foam • **Ventilation** is

assisted by a hull side vent

Instruments: Voltmeter, oil pressure gauge, temperature gauge, tachometer, hour meter

Warning lights: Two charge, oil pressure, temperature, heater plugs

Fuel in approx 80 gallons steel tank with fuel gauge

STERN GEAR & TRANSMISSION

Engine **flexibly** mounted with Centaflex flexible coupling

Transmission by PRM 150 hydraulic gearbox with 2:1 reduction
 • The **weedhatch** is accessed under the cruiser deck and includes a quick-release lid • Stern tube lubricated by remote screw greaser
 • An electric bilge pump drains the stern tube sump

BOW THRUSTER

120kgf 10.7hp 24V BSC **bow thruster** • Powered by adjacent 115Ah battery bank • Batteries are charged by separate 230V Keepower 15A charger • Control is by push buttons at the helm
 • bilge pump in bow thruster compartment

GENERATOR

Dometic Travepower **3.5kW engine driven generator** provides 230V power at variable rpm

ELECTRIC SUPPLY

Twin alternators: **12V 45A (?)** alternator charges 1 x 110Ah (?) engine battery • **12V 95A** alternator charges 4 x 110Ah maintenance free cabin batteries • Charging also by **Victron 120A charger/inverter** in multi-stage automatic operation with 230V supply • Victron **digital monitor** displays several parameters of charge rate & battery state

The **12V** cabin system is protected by **circuit breakers** in a labelled, switched panel

230V circuit installed with one landline connection
 • **Independent onboard 230V power** from batteries via Victron **2.5kW pure sine wave inverter/charger** • Victron Multiplus inverters include Power Assist whereby the 230V input (landline or generator) can be boosted by the inverter to increase the amount of power available • **Independent onboard 230V power** also from Dometic **3.5kW 230V engine driven generator**
 • A selector switch ensures that only one 230V power source is used at any one time • **A galvanic isolator** is fitted to inhibit possible hull corrosion from 230V earth bond • Protected by RCD (residual current device) and overload circuit breakers

STEERING

Main steering is by wheel on the aft deck

• emergency manual tiller

STEELWORK & STYLE

10/6/5 Plating with flat bottom Shell in widebeam cruiser style

Raised handrails, inset from the cabin edge and deck edge cants
 • Well deck seat lockers • Midship rope ring on cabin roof • Recessed eyes for side fenders above top strake

(Note plating thickness cannot be measured during ABNB visits and is based on reported information)

ELECTRIC FITTINGS

Lights 12V: 14 brass rimmed downlighters, 2 brass bedhead wall lamps, 3 recessed downlighters, 1 chrome vanity light, 2 brass wall lamps
230V: 1 freestanding lampstand with 2 lamps

- NOTE most lights forward of the bathroom have been converted to LED

Power sockets:

12V: 1 (+ 1 phone charger socket)

230V: 24 (+ 1 shaver socket)

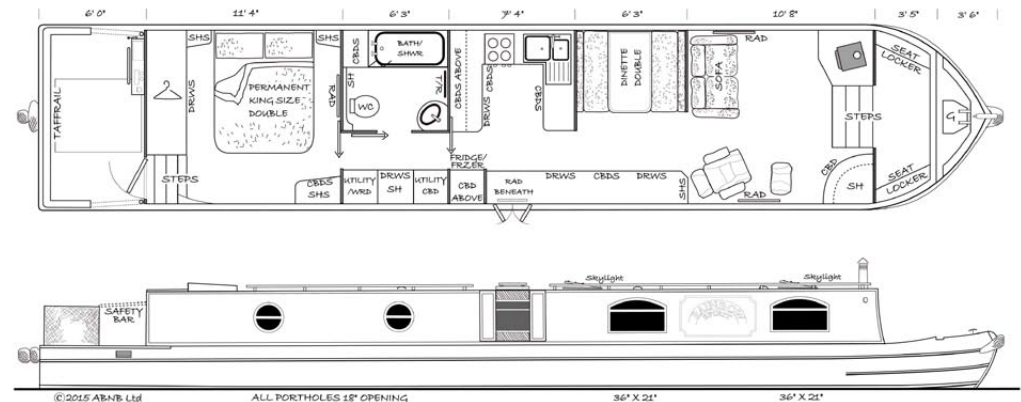
External TV aerial socket to 2 internal sockets • Satellite dish & Zehnder 230V satellite decoder

WINDOWS & DOORS

5 x aluminium framed **windows**, 21in deep x 36in wide, with top drop-back hopper panels, except 1 with slider • The frames are gold powder coated
 • 4 x 18in diameter **portholes**, all of which open

2 houdini **skylights** set in the cabin top

The glazed forward bulkhead carries glazed, steel-skinned doors with interior timber linings • Aft & side doors are of steel with timber linings
 • One set of side doors with a roof hatch



©2015 ABNB Ltd

ALL PORTHOLE 18" OPENING

36" X 22"

36" X 22"

DECKS

Forward well deck & aft deck are of **steel** and are **self-draining**
 • Access to the engine is through ply panels, which sit on **self-draining** bearers in the

cruiser deck • Fitted wind dodger around the taffrail • Well & cruiser decks have rubber matting • Steerer sits on timber capped taffrail
 • Gunwales & cruiser deck are finished with slip resistant surfaces

TRAD FITTINGS

Brasswork: Chimney bands, mushroom vents, fairleads, 2 folding stirrup steps (which make climbing on the roof easier), 2 powder coated houdini skylights



RAINBOW SPIRIT

BATHROOM

Hip bath 47in x 27in with shower over, curtain and tiled surround

Washbasin on ceramic pedestal

Sani Marin **macerator flush pump-out wc** to remote 81 gallon (approx) polypropylene tank with contents gauge • Spare **portable** Thetford cassette wc



CABIN HEATING

Morsø Squirrel 4.5kW **solid fuel stove**, set in tiled fireplace

Webasto Thermo top C 5.2kW **compact diesel boiler**, controlled by mini programmer, runs 4 panel radiators & 1 towel rail

FURNISHINGS

Dinette upholstery is orange, piped cotton

Curtains are blue & red chequered, lined & hung on brass rods with wooden retaining bars • Red venetian blind over galley porthole • Blue venetian blind over corridor porthole • Bathroom porthole fitted with white waterproof curtain

Floor is fitted with solid oak boards • Except stone effect laminate in the bathroom

WATER HEATING

11 gallons (approx) lagged **calorifier** heated by engine and central heating boiler

BEHIND THE LININGS

Ballast: The underfloor space contains concrete slab ballast

Insulation: The cabin is insulated by **sprayed polyurethane (pu) foam** behind all external linings (except underfloor) • Sprayed pu foam is widely recognised as the most thermally efficient form of insulation available for narrowboats • It is the only type that also acts as a vapour barrier

SLEEPING

4 berths in 2 cabins, consisting of:

6ft 0in x 5ft 2in **permanent double** with memory foam mattress

6ft 0in x 4ft 3in **double** on convertible raised Pullman dinette

WATER SYSTEM

110 gallons (approx) **stainless steel** water tank with contents gauge

Automatic water pump

H&C supply to stainless steel sink & drainer unit in galley, washing machine & bathroom

• Additional tap with water filter

GAS SYSTEM

2 x 6kg propane gas cylinders • Manual changeover with single pigtailed

ALARMS

1 **combined smoke & carbon monoxide alarm**

STORAGE

	Drawers	Cupboards	Shelves
Saloon	-	1	2
Dinette	3	1	2
Galley	6	5	-
Corridor	5	2*	1
Bathroom	-	3**	2
Bedroom	4	3***	3

* Incl large wardrobe; ** Incl mirror fronted medicine cabinet *** Incl 2 wardrobes/utility store
Also storage under double berth & dinette

SEATING & EATING

1 **freestanding 2 seater leather sofa**

1 **freestanding leather arm chair** with matching footstool

2 folding high chairs

Eating at convertible Desmo legged **table** on raised Pullman (to give a better view out whilst eating)

WASHING

Candy Aquamatic compact **washing machine**



FITTING-OUT

Joint professional/first owner fitout to a high standard, all finishes have been maintained to a good standard, designed with large open cabins & easy to clean galley worktops.

Linings: Headlining (ceiling), bulkheads (walls), cabin & hull sides lined in ash faced plywood • Framing

in solid ash

Furniture: Galley is based on ready-made veneered mdf units • Doors are cream coated Shaker style • Other furniture is custom built ash with framed flat panel doors • Galley worktop & splashbacks are laminate • Bathroom splashbacks are tiled

FINISHES

Hull: Lower hull sides coated with Rytex bitumastic paint • Hull sides above top rubbing strake finished in blue enamel

Superstructure: Cabin sides painted blue with red coachlines with square corners • Cabin top & handrails painted light blue



DIMENSIONS

Overall length: 54ft 9in

Foredeck: 3ft 6in

Well deck: 3ft 5in

Overall cabin length: 41ft 10in

consisting of

Saloon: 10ft 8in

Dinette: 6ft 3in

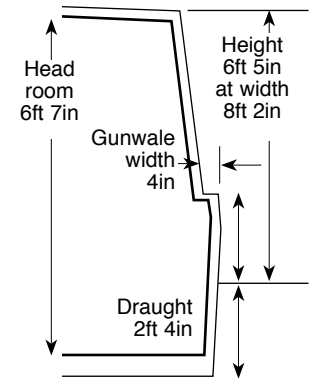
Galley: 7ft 4in

Bathroom: 6ft 3in

Bedroom: 11ft 4in

Aft cruiser deck: 6ft 0in

Max air draught 6ft 11in



This brochure & specification design is the property of and

©2015 **ABNB LTD**

Ref: 2771/0419/G

RAINBOW SPIRIT

INVENTORY

On-deck items include: Tunnel light, horn, navigation lights, • Fenders: Bow button vee, aft tipcat & button, side fenders • Pole, hook, plank on wooden rack, mooring spikes, windlasses and hammer • Anchor, chain & warp

A cabin inventory list will be available when viewing.

CERTIFICATION

A BSS Certificate issued by Richard Fee expires on 23/05/2015.

OWNERSHIP HISTORY

One private owner from new.

MAINTENANCE HISTORY

Engine: Serviced annually with last service April 2014. Running hours recorded at ABNB visit: 877.

Hull: The boat was last blacked in August 2016 and is fitted with 4 magnesium sacrificial anodes. Hull survey dated August 2016 available to read.

Superstructure: The superstructure was repainted in 2011.

LOCATION

Private mooring on the Leeds & Liverpool Canal – approx 25 miles from J3 M606

Appointments to view strictly through ABNB.



PLEASE NOTE: This is sales information and not a survey report; providing content details only. The specification in these pages is based on ABNB's visit to the boat and on information given by the owner. This is to help you decide whether to investigate the boat further, be it by surveyor or otherwise. The information here is given in good faith but no description, statement, promise of work to be done, or suggestion for future use, constitutes an offer.

